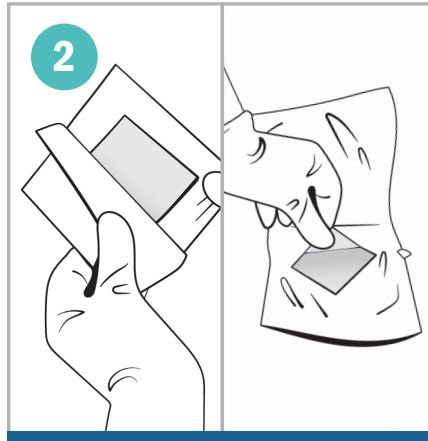




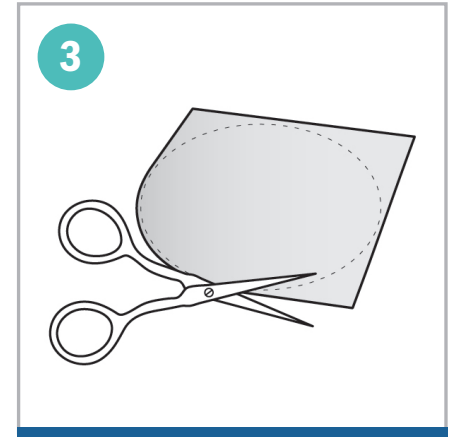
1 **Clean the wound** area using sterile saline solution.

If the wound is dry, moisten it with sterile saline and remove excess saline with sterile gauze.

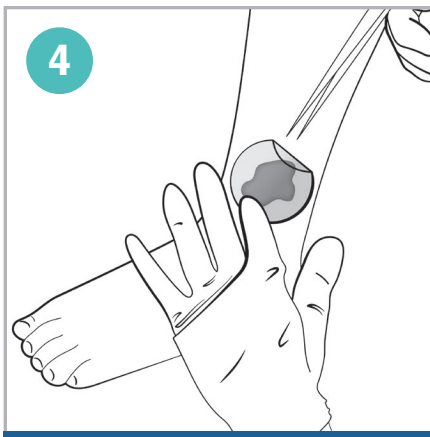
Avoid contact with wet surfaces until placed on a moist wound bed.



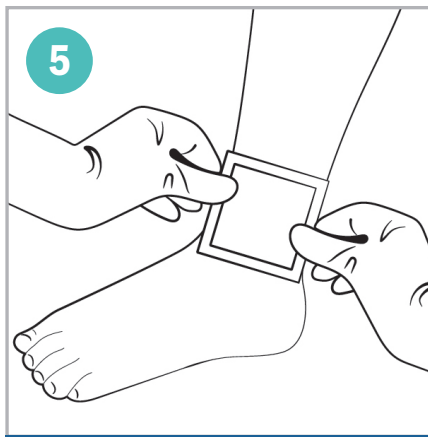
2 **Remove the dressing** from the package.



3 **Cut the dressing** to a size slightly larger than the wound. Multiple sheets can be used to tile the entire wound area.



4 **Apply the dressing** directly to wound bed. When placed on a moist wound bed, the dressing forms a soft conforming sheet.



This primary dressing should be used with a secondary cover dressing. **Cover with a moisture retentive dressing**, such as a film dressing, foam dressing, wet-to-dry gauze or other appropriate dressing. See individual cover dressing package inserts for complete instructions for use.

DIRECTIONS FOR USE:

Under the direction of a healthcare professional, **Microlyte™ Ag** may be used for more serious wounds such as partial and full thickness pressure ulcers, venous stasis ulcers, diabetic ulcers, first and second degree burns, abrasions and lacerations, donor sites and surgical wounds. May be used over debrided and grafted partial thickness wounds.

All wounds should be inspected daily. Reapply **Microlyte™ Ag** dressing every 3 days, depending on the wound and healing progression, or when clinically indicated (e.g. leakage, excessive bleeding, increased pain).