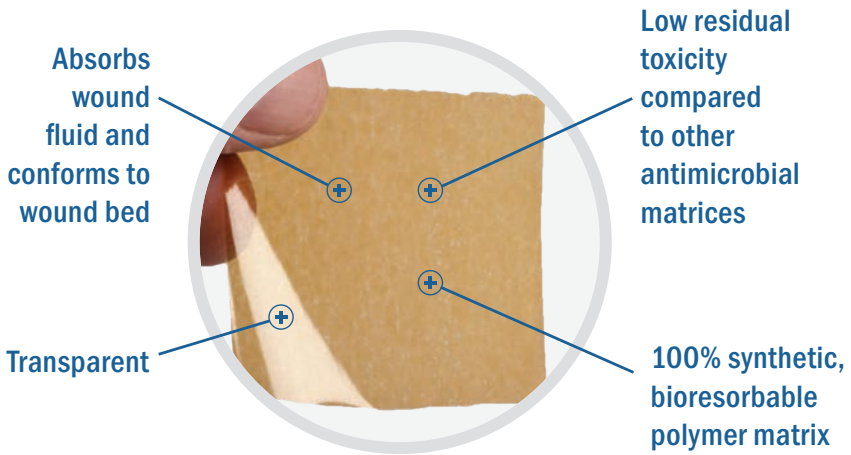


MicroLyte AG

Antimicrobial Wound Matrix™

Prior to applying MicroLyte® Ag Matrix, prepare the wound using standard wound care protocols, including removal of necrotic tissue by debridement.



Need to re-order more MicroLyte® Ag Matrix?

See below for a table of manufacturer item codes and available sizes.

| SKU | Product Size | Ea/Box | Boxes/Case | HCPCS |
|----------|--------------------------|--------|------------|-------|
| MLA91001 | 2" x 2" 5 cm x 5 cm | 5 | 10 | A6242 |
| MLA91002 | 4" x 4" 10 cm x 10 cm | 5 | 10 | A6243 |

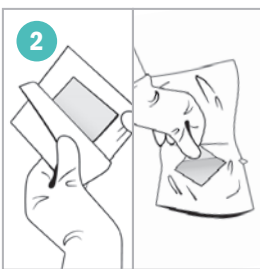
To re-order more MicroLyte® Ag Matrix, call **608-237-1525** or email orders@imbedbio.com.

User Guide

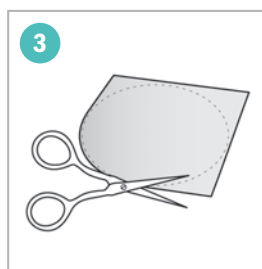
Refer to the instructions for use. Before application, necrotic tissue must first be removed by debridement. Prepare the wound according to appropriate wound management protocol.



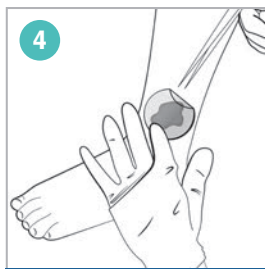
1
Prepare the wound using standard wound care protocol, which may include **removal of any necrotic tissue by debridement**. Moisten dry wounds with sterile saline. Avoid contact of matrix with wet surfaces until placed on a moist wound.



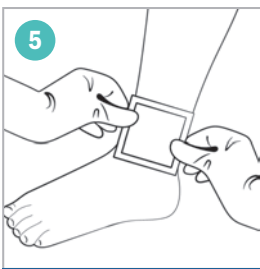
2
Remove the matrix from the package.



3
Cut the matrix to a size slightly larger than the wound. Multiple sheets can be used to tile the entire wound area.



4
Apply the matrix directly to wound bed. When placed on a moist wound, the matrix forms a soft conforming sheet. **Matrix may be used under compression therapy** under the supervision of a healthcare professional.



5
Cover the matrix used with a secondary moisture retentive dressing, such as a wet-to-dry gauze or other appropriate dressing. Change secondary dressing as appropriate or when MicroLyte® Ag Matrix is reapplied. **It is not necessary to remove any residual MicroLyte® Ag Matrix during dressing changes.**

Reapply MicroLyte® Ag Matrix daily or up to every 3 days, depending on the wound and the healing progression, or when clinically indicated (e.g. leakage, excessive bleeding, increased pain).

The duration of the treatment depends on wound type and healing conditions.